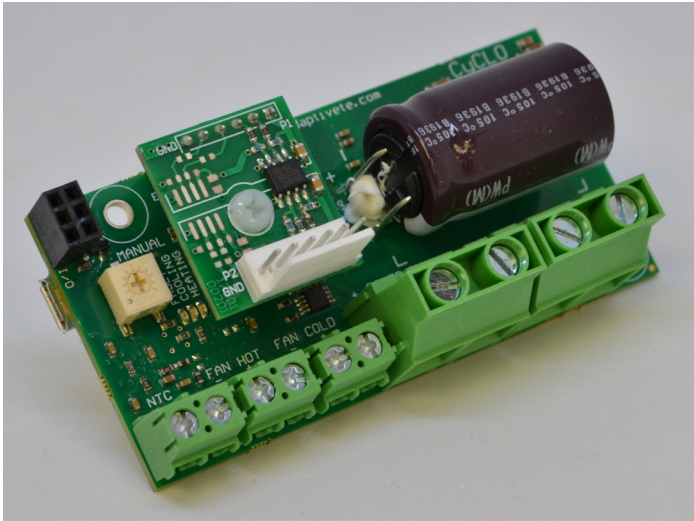


Adaptive[®] CyCLO Controller ADC-48-450-U



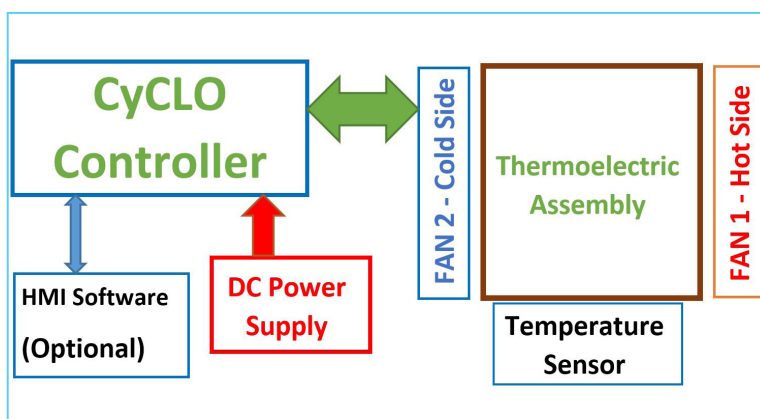
Features

- High efficiency load driver
- Cost effective NTC sensor input
- Hot and cold side fan outputs
- Manual setpoint for quick installation
- USB 2.0 communication
- Isolated Serial communication (optional)
- Visual/alarm feedback (Heating/Cooling/Shutdown)

Description

The Adaptive[®] CyCLO is a servo controlled pulse width modulator (PWM), intended for thermoelectric cooler or heater applications that require a uni or a bidirectional drive source for accurate temperature control. The controller is capable of operating in a standalone mode, it is also supported by user-friendly PC software. The controller is targeting applications where easy deployment is a requirement.

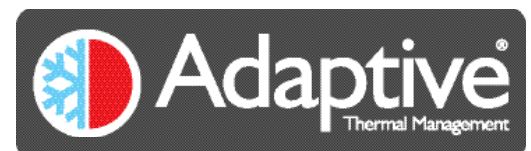
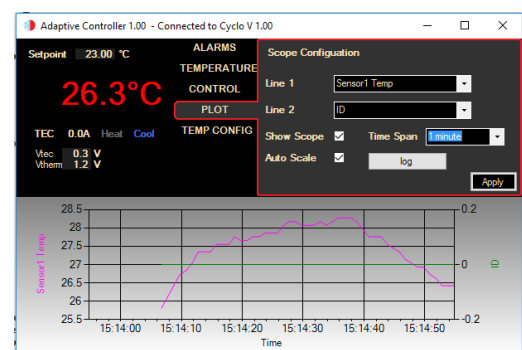
System Architecture



PC Software

Download the user-friendly PC software from:

AdaptiveTE.com/downloads



Adaptive[®] CyCLO Controller

ADC-48-450-U

Typical Specifications

Input voltage range	11V - 48V DC
Maximum load	7A
Control temperature	-5°C to +60°C
Operating temperature	-25°C to 85°C
Compatible fans	2 wire fans
Fan output voltage range	11V - 48V DC
Sensor type	NTC 10k (pre-calibrated)
Communication interface	USB
Temperature control accuracy	+/- 1°C
Protection	Overcurrent, overvoltage, undervoltage lockout, fuse.

Further information

- Application type - Fans & thermal management
- Application sub type - Electronics heating & cooling
- Contents: 1x controller board

Adaptive Thermal Controllers - Part Numbers

ADC= Adaptive CYCLO Controller

48 = Voltage

450 = Wattage

Connection type

U – USB connection

Suffix

No additional number - standard

Additional number : 001 – 999 – custom option

