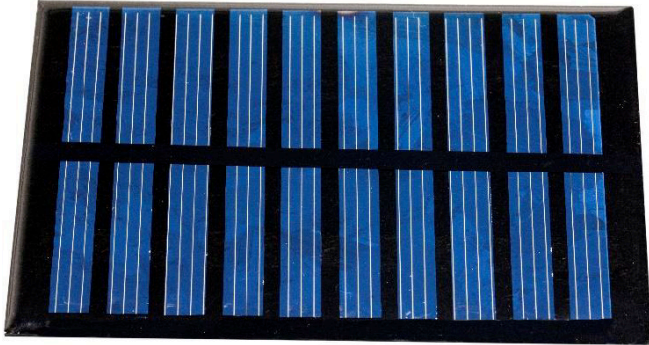


Adaptive® Solar Panel

ADEH-PD-A



Features

- High efficiency
- 5V, 0.55W nominal performance
- Size (mm) (L x W x D): 99 x 69 x 2.5
- Weight: 21g

Applications

- Main or auxiliary power for embedded applications featuring low power MCUs
- Low power wireless transceivers
- Energy harvesting sensors

Description

The ADEH-PD-A is a frameless solar panel for easy and cost effective evaluation of energy harvesting buck-boost converters. This small form factor solar panel is targeting low power embedded applications where the main or auxiliary power requirements are fulfilled by means of a photovoltaic device.

Absolute Maximum Ratings

V_{VOUT_OC}	5.8V
V_{MPP}	4.8 to 5.1V
I_{SC_MAX}	0.12A
Operating Temperature	-20 to 56 °C

For more information visit: www.adaptivete.com



Typical Performance Characteristics

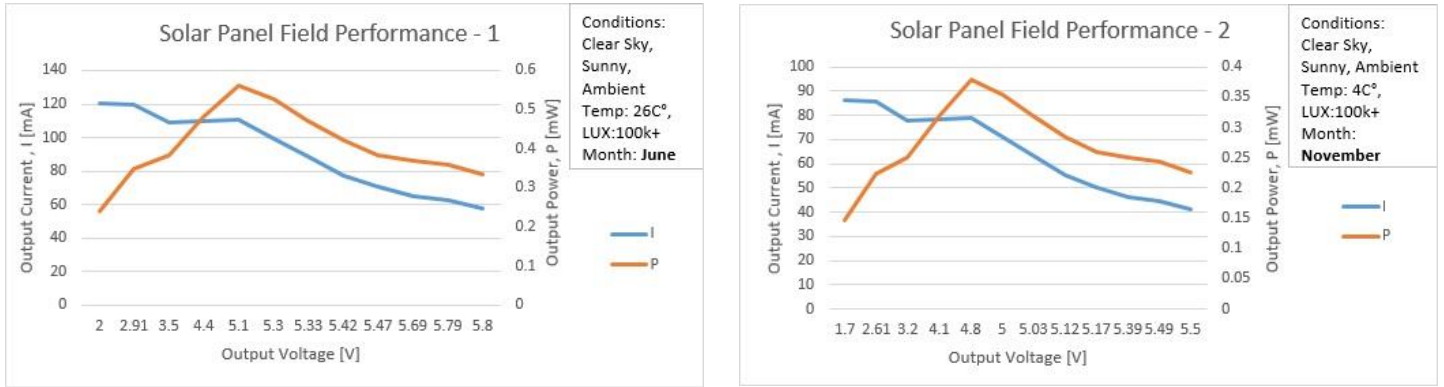


Figure 1 - 2: Field Electrical Performance

Application Information

Energy Harvesting

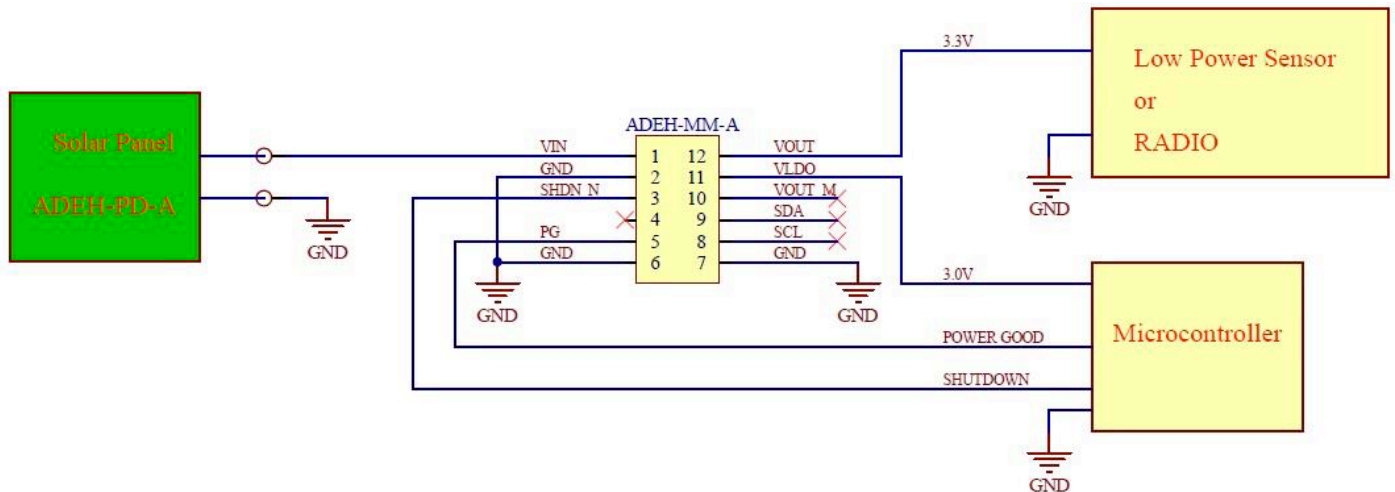


Figure 2: Example energy harvesting application using ADEH-PD-A as a power source

For more information visit: www.adaptivete.com



Mechanical Information

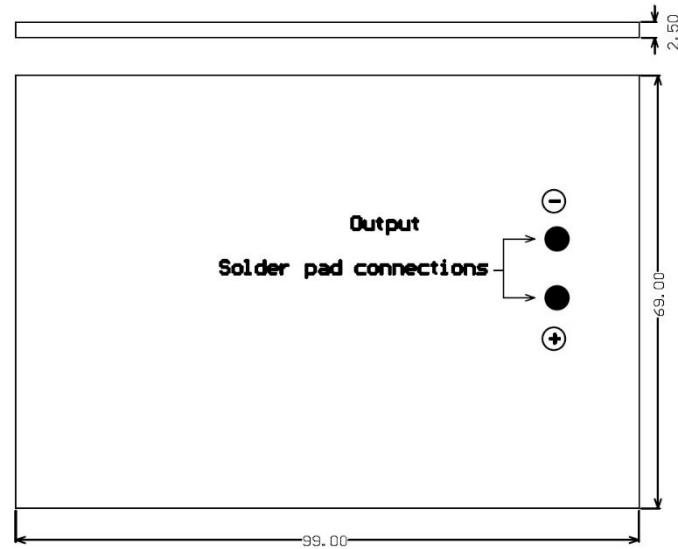


Figure 4: Mechanical dimensions and electrical connection

For more information visit: www.adaptivete.com

